



Leggett & James

The Vale of Evesham Property Experts



23 The Leys

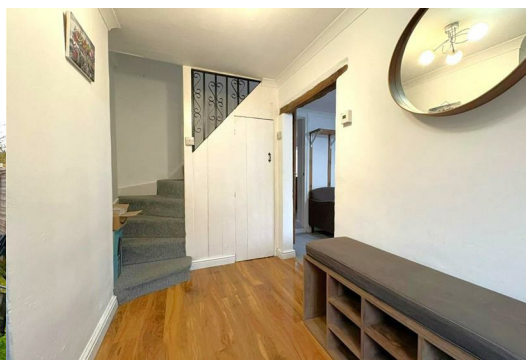
, Evesham, WR11 3AR

Asking Price £200,000



CHAIN FREE END OF TERRACE COTTAGE WITH SPACIOUS KITCHEN/DINER OVERLOOKING THE REAR GARDEN

This well presented two bedroom end of terrace cottage is offered to the market with no onward chain, offering the purchaser a hassle free, smooth purchase. The property boasts a well maintained and generous rear garden, spacious kitchen/diner and ensuite to the main bedroom.



The Property

As you approach the property you will find a side gate offering access to the generous rear garden.

The ground floor comprises: entrance hall, living room, kitchen/diner, bathroom.

The first floor comprises: first floor landing, bedroom 2, first floor study.

The second floor comprises: bedroom 1 & ensuite shower room.

The property further benefits from gas central heating, double glazing throughout and enclosed rear garden.

Tenure - Freehold
Council Tax Band - B

Entrance Hall 6'2 x 11'11 (1.88m x 3.63m)

The welcoming entrance hall makes a great first impression for the home with a useful under stairs storage cupboard and stairs rising to the first floor.

Living Room 12'1 x 11'6 (3.68m x 3.51m)

The ideal place to relax and unwind, the living room has a double glazed window to the front aspect and panel radiator.

Kitchen Diner 19'0 x 10'11 (5.79m x 3.33m)

The spacious kitchen diner is ideal for those that like to entertain. The room has a panel radiator, double glazed window to the rear aspect as well as a double glazed door offering access to the rear garden. The kitchen itself comprises of a range of wall & base units, electric oven & hob, sink with drainer, space for a washing machine and built in, under counter fridge and freezer.

Bathroom 9'0 x 5'9 (2.74m x 1.75m)

The bathroom has a double glazed window to the side aspect and a useful storage cupboard. The suite comprises of a low level WC, hand wash basin, p-shaped bath with shower over and shower screen.

First Floor Landing

The first floor landing has a double glazed window to the rear aspect and offers access to the second bedroom and study.

Bedroom 2 12'0 x 9'9 (3.66m x 2.97m)

Double bedroom with dual aspect double glazed windows to the front and rear aspects and panel radiator.

First Floor Study 9'3 x 8'0 (2.82m x 2.44m)

The useful study is a flexible space which is ideal for a number of uses (could be used as an occasional bedroom) has a double glazed window to the front aspect and panel radiator. There is a door offering access to the stairs which rise to the second floor bedroom.

Bedroom 1 18'3 x 12'1 (5.56m x 3.68m)

Generous double bedroom with two double glazed windows to the front aspect and panel radiator. The bedroom has access to it's own modern ensuite shower room.

Ensuite Shower Room 6'9 x 4'10 (2.06m x 1.47m)

The modern ensuite shower room comprises of a low level WC, corner hand wash basin, shower cubicle and extractor fan.

Outside

As you approach the property you will find a side gate offering access to the generous rear garden.

At the rear of the property is a generous rear garden. The garden is well kept with a patio, lawn beyond and good sized shed.

Referrals

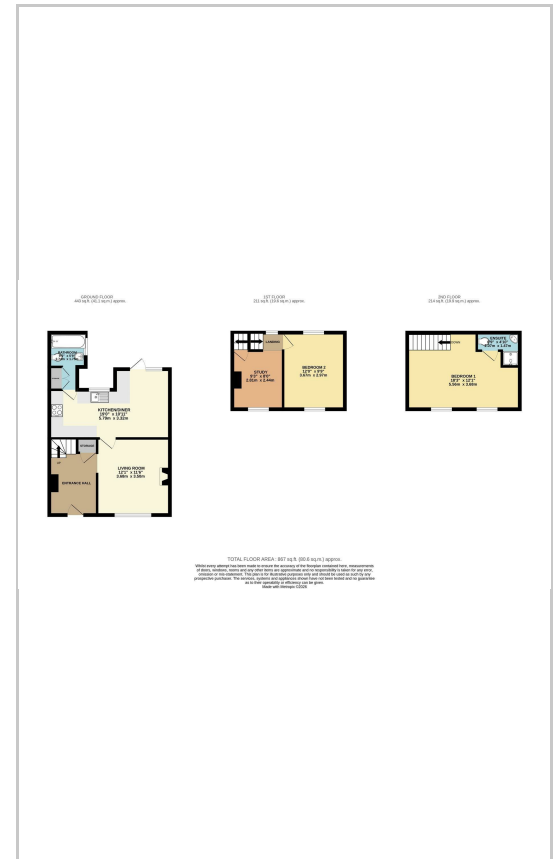
We routinely refer to the below companies in connection with our business. It is your decision whether you choose to deal with these. Should you decide to use a company below, referred by Leggett & James Ltd, you should know that Leggett & James Ltd would receive the referral fees as stated. Team Property Services £100 per transaction on completion of sale and £30 of Love2Shop vouchers on completion of sale per transaction.

These particulars, whilst believed to be accurate are set out as a general outline only for guidance and do not constitute any part of an offer or contract. Intending purchasers should not rely on them as statements of representation of fact, but must satisfy themselves by inspection or otherwise as to their accuracy. No person in this firm's employment has the authority to make or give any representation or warranty in respect of the property.

Area Map



Floor Plans



Energy Efficiency Graph

